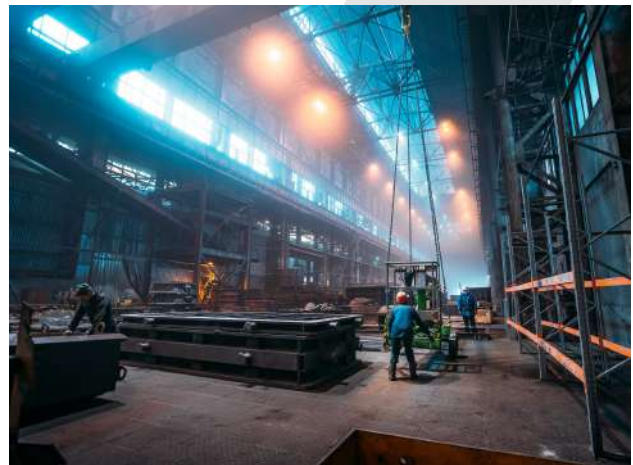




## Loss Event: Fire and Water Damage Batavia, IL

A 500,000 sq. ft. manufacturing facility sustained heavy fire, smoke, soot and water damage following an explosion at its main production facility. The damages to the facility and manufacturing equipment were in excess of \$8 million. The blast caused severe fire damage to the plant's production facility, affecting the main production lines and sub-assembly. The fire ignited combustible materials causing additional damage to the plant's operational equipment, covering a large portion of the facility with soot. The fire suppression initiatives caused further water damage to the interior and the exterior of the facility.

Fire damage, at any scale, calls for quick action, as damages can become worse with every passing minute. Signal Restoration provided all the necessary services to provide a complete solution, from inventory and assessment, to containment, restoration and reconstruction.



### The scope of the recovery work included:

- Cleaned, serviced, and replaced damaged production line components and equipment
- Removed all impacted materials
- Provided dehumidification services
- Isolated fire damaged areas in order to reduce plant downtime
- Erected containment walls to isolate fire damaged areas from work areas
- Initiated containment measures so that production can continue during the restoration process
- Cleaned, restored and reconstructed the damaged areas of the plant interior
- Complete restoration and reconstruction of the affected area of the plant exterior
- Rebuilt an entire production line to OEM specifications